

Hilton Garden Inn

Prototype Building Drawings for:

Hilton Garden Inn® Five Story Building

Hilton Hotels Corporation

9336 Civic Center Drive

Beverly Hills, CA 90210

Revision 6.0

Issues and Revisions

No.	Date	Issues and Revisions

NOTE OF CAUTION:
These prototype plans are based on our interpretation of the Americans with Disabilities Act ("ADA") and the ADA Accessibility Guidelines. Hilton Hotels Corporation does not and cannot warrant that our interpretation of ADA requirements conforms with all others. The Owner of the project controls the ultimate design and construction and is responsible for the compliance with applicable provisions of the ADA. The Owner is urged to seek appropriate counsel to ensure such compliance. Each Owner is to verify with the local code enforcement for any additional accessibility requirements.

Use of these plans and/or specifications shall in no way give rise to any liability on the part of Hilton Hotel Corporation, for any defect or deficiency of said plans and/or specifications. Any person using these plans and/or specifications must verify through his own means, architect, engineers, and other professionals, their compliance with any law and adequacy for the intended purpose as Hilton Hotels Corporation makes no representation whatsoever in that regard. The quality of workmanship and the adequacy and suitability of the plans, specification and design data for a particular project is the sole responsibility of the Owner.

Project Number:

Project Name:

Hilton Hotels Corporation

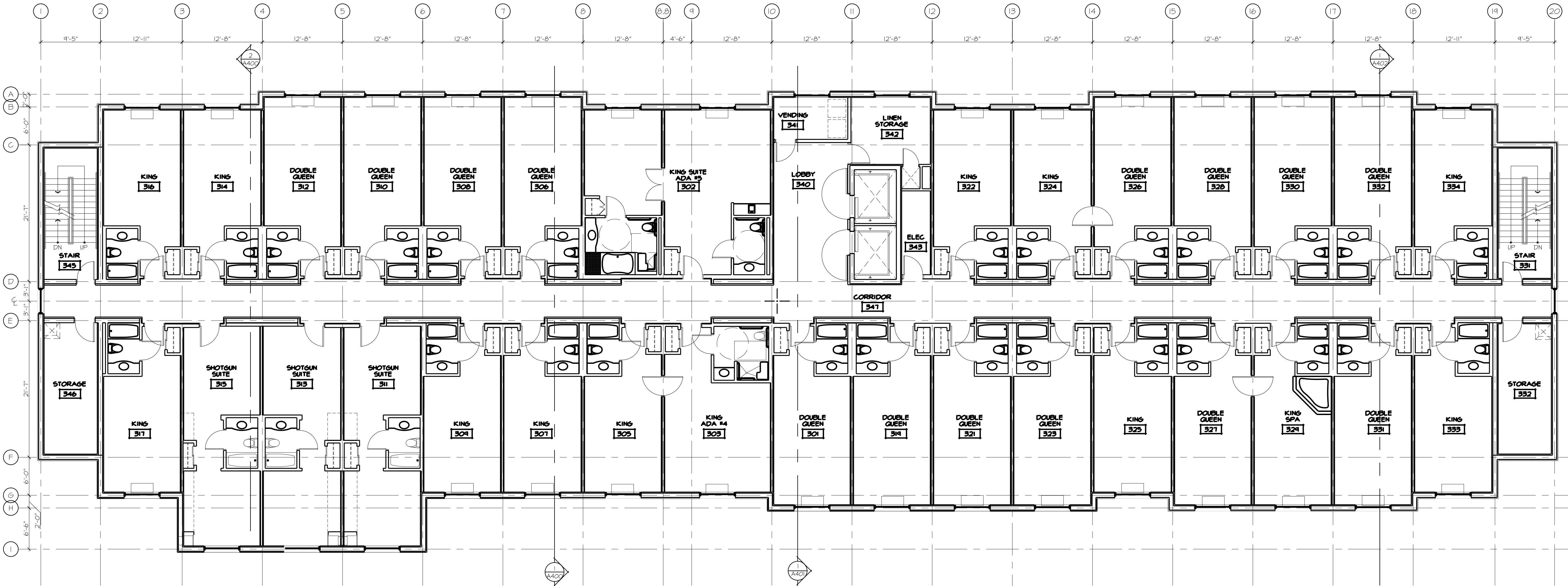
Garden Inn Prototypes

Drawing Name:

Third Floor Reference Plan

Drawn By: KLD/LDM

Checked By: TM/MK



1 THIRD FLOOR REFERENCE PLAN
1/8" = 1'-0"



5803-159

A103

T:\2009\Hilton Garden Inn\Hilton Prototype\Contract Documents\HGL_3_msl - 5 story\DWGS\01 - Site_Floor_Plan\5s103.dwg, 9/18/2006 1:27:44 PM